

SUS316

PE, PV, PY, PM, PU, PP, PGJ, PEG, PYW, PG



Ordering Code

S6 - PE 10

S6 - PEG 10 - 8

① ② ③

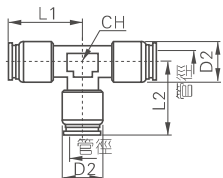
Model	PE	PV	PY	PM	PU	PP	PGJ	PEG	PYW	PG
Port size	4: Φ4mm 6: Φ6mm 8: Φ8mm 10: Φ10mm 12: Φ12mm 14: Φ14mm 16: Φ16mm						6: Φ6mm 8: Φ8mm 10: Φ10mm 12: Φ12mm 14: Φ14mm 16: Φ16mm			
Thread connection							4: Φ4mm 6: Φ6mm 8: Φ8mm 10: Φ10mm 12: Φ12mm 14: Φ14mm			

Configuration table of tubing

Product series	Port size						Product series	Tubing diameter	Thread connection						
	4	6	8	10	12	14			16	6	8	10	12	14	16
PE, PV PM, PU PP	●	●	●	●	●	●		4	●	●					
PY	●	●	●	●	●			6		●					
								8			●				
								10				●	●		
								12					●	●	
								14						●	
								4	●	●					
								6		●	●				
								8			●	●			
								10				●			
								12					●		
								14						●	

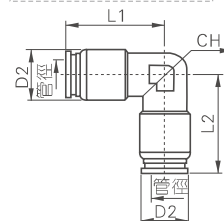
Dimensions

PE



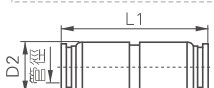
Model/Item	D	L1	L2	D2	CH
S6-PE4	4	23	23	10.5	9.2
S6-PE6	6	24	24	12.5	9.2
S6-PE8	8	27	27	14.5	11.2
S6-PE10	10	30.5	30.5	17.5	13.2
S6-PE12	12	34	34	20.5	15.5
S6-PE14	14	37	37	22	20.6
S6-PE16	16	38	38	24	20.6

PV



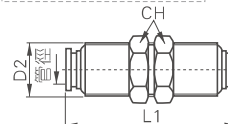
Model/Item	D	L1	L2	D2	CH
S6-PV4	4	23	23	10.5	9.2
S6-PV6	6	24	24	12.5	9.2
S6-PV8	8	27	27	14.5	11.2
S6-PV10	10	30.5	30.5	17.5	13.2
S6-PV12	12	34	34	20.5	15.5
S6-PV14	14	37	37	22	20.6
S6-PV16	16	38	38	24	20.6

PU



Model/Item	D	L1	D2
S6-PU4	4	30	10.5
S6-PU6	6	32	12.5
S6-PU8	8	34	14.5
S6-PU10	10	36	17.5
S6-PU12	12	41	20.5
S6-PU14	14	42	22
S6-PU16	16	47.6	24

PM

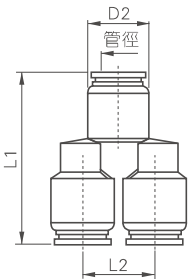


Model/Item	D	L1	D2	CH
S6-PM4	4	30	12	14
S6-PM6	6	32	14	17
S6-PM8	8	34	16	19
S6-PM10	10	36	19	22
S6-PM12	12	41	22	24
S6-PM14	14	42	24	27
S6-PM16	16	47.6	26	29

PY



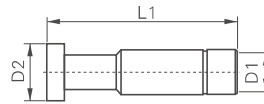
Model/Item	D	L1	L2	D2
S6-PY4	4	35	13	11
S6-PY6	6	37.5	16	13
S6-PY8	8	41.3	18	15
S6-PY10	10	44.3	21	18
S6-PY12	12	51	24	21



PP



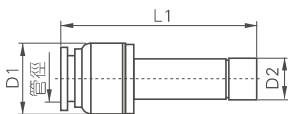
Model/Item	D1	D2	L1
S6-PP4	6	4	28
S6-PP6	8	6	33
S6-PP8	10	8	37
S6-PP10	12	10	42
S6-PP12	14	12	44
S6-PP14	16	14	46
S6-PP16	18	16	49



PGJ



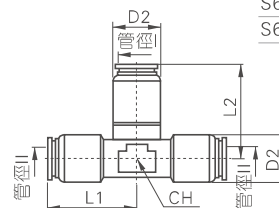
Model/Item	D	D1	D2	L1
S6-PGJ6-4	4	10.5	6	41
S6-PGJ8-6	6	12.5	8	44
S6-PGJ8-4	4	10.5	8	43
S6-PGJ10-8	8	14.5	10	47
S6-PGJ10-6	6	12.5	10	47
S6-PGJ12-8	8	14.5	12	52
S6-PGJ12-10	10	17.5	12	53
S6-PGJ14-12	12	20.5	14	56
S6-PGJ14-10	10	17.5	14	56
S6-PGJ16-14	14	22	16	58
S6-PGJ16-12	12	20.5	16	58



PEG



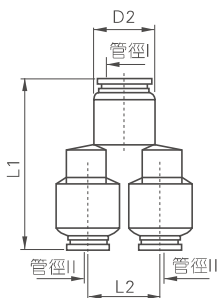
Model/Item	D	D1	L1	D1	D2	CH
S6-PEG6-4	4	6	24	10.5	12.5	9.2
S6-PEG8-4	4	8	27	10.5	14.5	11.2
S6-PEG8-6	6	8	27	12.5	14.5	11.2
S6-PEG10-6	6	10	30.5	12.5	17.5	13.2
S6-PEG10-8	8	10	30.5	14.5	17.5	13.2
S6-PEG12-8	8	12	34	14.5	20.5	15.5
S6-PEG12-10	10	12	34	17.5	20.5	15.5
S6-PEG14-10	10	14	37	17.5	22	20.6
S6-PEG14-12	12	14	37	20.5	22	20.6
S6-PEG16-12	12	16	38	20.5	24	20.6
S6-PEG16-14	14	16	38	22	24	20.6



PYW



Model/Item	D	D	L1	L2	D1
S6-PYW6-4	6	4	37.5	16	13
S6-PYW8-4	8	4	41.3	18	15
S6-PYW8-6	8	6	41.3	18	15
S6-PYW10-6	10	6	44.3	21	18
S6-PYW10-8	10	8	44.3	21	18
S6-PYW12-8	12	8	51	24	21
S6-PYW12-10	12	10	51	24	21



PG



Model/Item	D	D	D1	D2	L1
S6-PG6-4	4	6	10.5	12.5	30.6
S6-PG8-4	4	8	10.5	14.5	31.6
S6-PG8-6	6	8	12.5	14.5	32.8
S6-PG10-6	6	10	12.5	17.5	34
S6-PG10-8	8	10	14.5	17.5	35
S6-PG12-8	8	12	14.5	20.5	37
S6-PG12-10	10	12	17.5	20.5	38.2
S6-PG14-10	10	14	17.5	22	39
S6-PG14-12	12	14	20.5	22	42
S6-PG16-12	12	16	20.5	24	43
S6-PG16-14	14	16	22	24	44

